



LED VAPOR PROOF FIXTURE



LED VaporProof fixtures are a modern contemporary lighting fixture widely used in many different commercial and residential environments. It has many features that make it the perfect choice for wet and dusty locations. They can be used in car washes, warehouses, parking garages, stairwells, pool areas, etc.



LED Vaporproof fixtures will significantly reduce energy consumption and decrease your energy costs. They are very easy to install and are the perfect replacement for your existing florescent fixture. A polycarbonate body makes this fixture impact resistant and able to maintain its luster over time.

LED Vaporproof fixtures are maintenance-free and produce bright, high quality light without shadows. Our affordable price makes it an ideal option for any commercial or residential application.

FEATURES AND BENEFITS:

- ✓ Contemporary design
- ✓ 3500K, 4000K & 5000K available
- ✓ Low energy consumption
- ✓ Suitable for wet locations
- ✓ Surface mounted and suspended luminaire
- ✓ Lifetime > 25,000 hrs
- ✓ 2-year limited warranty

Family	Modification	Lens	Type	Non dimmable	Watts	CCT
LVP	5	M		N		
LED VaporProof		Translucent white Lens	2 = 2 ft 4 = 4 ft		18 = 18 W 36 = 36 W	35 = 3500 K 40 = 4000 K 50 = 5000 K

LED VAPORPROOF FIXTURE:

Model	Type	Watts	Dimming Compatible	CCT	Lumens	Dimensions (LxWxH)
LVP5M-2N1835	2 ft	18 W	Non-dimmable	3,500 K	1,350 lm	23.6" x 3" x 2.6"
LVP5M-2N1840	2 ft	18 W	Non-dimmable	4,000 K	1,350 lm	23.6" x 3" x 2.6"
LVP5M-2N1850	2 ft	18 W	Non-dimmable	5,000 K	1,350 lm	23.6" x 3" x 2.6"
LVP5M-4N3635	4 ft	36 W	Non-dimmable	3,500 K	2,700 lm	47.2" x 3" x 2.6"
LVP5M-4N3640	4 ft	36 W	Non-dimmable	4,000 K	2,700 lm	47.2" x 3" x 2.6"
LVP5M-4N3650	4 ft	36 W	Non-dimmable	5,000 K	2,700 lm	47.2" x 3" x 2.6"



LED VAPOR PROOF FIXTURE

PRODUCT SPECIFICATIONS:

Model	LVP5M-2N1835 LVP5M-2N1840 LVP5M-2N1850	LVP5M-4N3635 LVP5M-4N3640 LVP5M-4N3650
Construction & Materials		
Weight	1.58 lb (0.72 kg)	2.82 lb (1.28 kg)
Lens	Translucent white lens	
Housing	Polycarbonate housing (PC)	
Mounting brackets	Stainless steel	
Finish Color	White	
Environmental System		
Work Environment	Suitable for wet locations, IP66	
Operating Temperature	-4-104°F (-20-40°C)	
LED Life	25,000 hrs	
Optical System		
Luminous Flux	1,350 lm	2,700 lm
Color Temperature	3,500 K; 4,000 K; 5,000 K	
CRI	70	
Electrical System		
Input Voltage	100-277VAC 50/60 Hz	
Off State Power	0 W	
Power Consumption	18 W	36 W
Power Factor	≥ 0.9	
Output voltage	30-42 V	
Max current	180 mA	350 mA

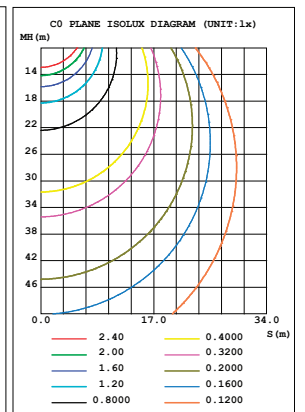
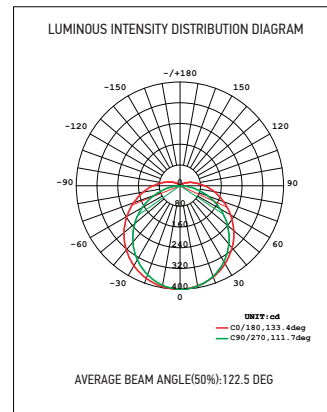
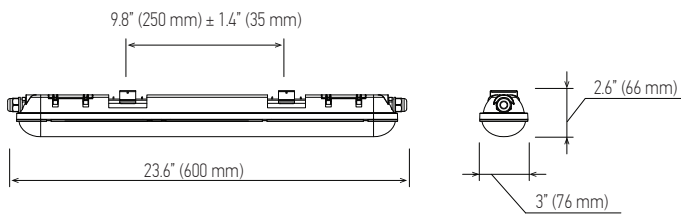


LED VAPOR PROOF FIXTURE

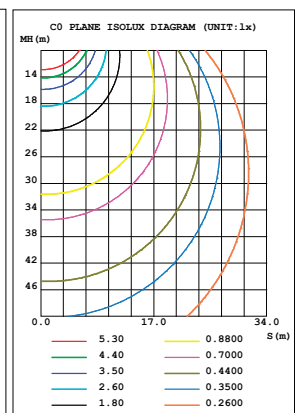
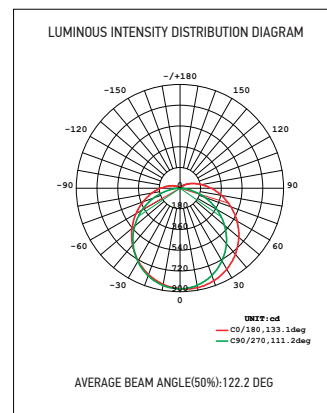
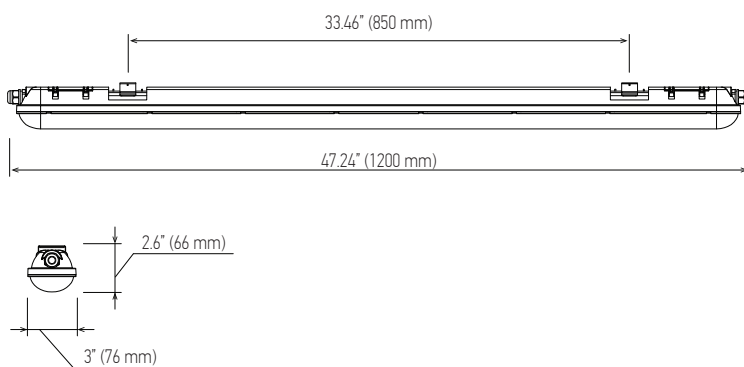
LED VAPORPROOF FIXTURE ORDERING INFORMATION:

Model	Type	Watts	CCT	UPS	GTIN 14	Product Code	Pcs in one Carton	Carton Size	Carton Weight
LVP5M-2N1835	2 ft	18 W	3,500 K	855029006003	10855029006000	123.0101	12	26"x13.2"x9"	24.3 lbs
LVP5M-2N1840	2 ft	18 W	4,000 K	859961005599	10859961005596	023.0105	12	26"x13.2"x9"	24.3 lbs
LVP5M-2N1850	2 ft	18 W	5,000 K	859961005605	10859961005602	023.0106	12	26"x13.2"x9"	24.3 lbs
LVP5M-4N3635	4 ft	36 W	3,500 K	859961005728	10859961005725	023.0109	12	49.6"x13.2"x9"	42 lbs
LVP5M-4N3640	4 ft	36 W	4,000 K	859961005735	10859961005732	023.0110	12	49.6"x13.2"x9"	42 lbs
LVP5M-4N3650	4 ft	36 W	5,000 K	859961005742	10859961005749	023.0111	12	49.6"x13.2"x9"	42 lbs

Models: LVP5M-2N1835, LVP5M-2N1840, LVP5M-2N1850



Models: LVP5M-4N3635, LVP5M-4N3640, LVP5M-4N3650





⚠ WARNING

RISK OF PERSONAL INJURY – READ and follow all WARNINGS and installation instructions.
Keep or give to the owner for future reference.

Risk of cuts: Wear gloves to prevent cuts or abrasions when removing from carton, handling, installing, and maintaining this product.

Risk of electric shock: This product must be installed in accordance with the applicable installation code by a person familiar with the construction and operation of the product and the hazards involved.

Risk of Fire: Minimum 90°C supply conductors. Consult a qualified electrician to ensure correct branch circuit conductor.
Supplier assumes no responsibility for claims arising out of improper or careless Installation or handling of this product.

⚠ AVERTISSEMENT

RISQUE DE BLESSURES - Lisez et suivez toutes les MISES EN GARDE et les instructions d'installation.
Tenir ou fournir au propriétaire pour référence future.

Risque de coupures: Porter des gants pour éviter les coupures ou des écorchures lors du retrait du carton, de la manutention, l'installation et le maintien de ce produit.

Risque de choc électrique: Ce produit doit être Installé conformément au code d'installation applicable par une personne familiarisée avec la construction et l'exploitation du produit et les risques impliqués.

Risque d'incendie: minimum 90° C Alimentation conducteurs. Consultez un électricien qualifié pour assurer le bon conducteur de circuit de dérivation.

Supplier n'assume aucune responsabilité pour les réclamations découlant d'une installation inadéquate ou négligente ou de la manipulation de ce produit.

⚠ ADVERTENCIA

RIESGO DE LESIONES PERSONALES – Lea y siga todas las advertencias e instrucciones de instalación.
Mantener o proporcionar al propietario para referencia futura.

Riesgo de cortes: Use guantes para evitar cortes o abrasiones en la eliminación de la caja, manejo, instalación y mantenimiento de este producto.

Riesgo de choque eléctrico. Este producto debe ser instalado de acuerdo con el código de Instalación aplicable en que una persona familiarizada con la construcción y operación del producto y los riesgos involucrados.

Riesgo de Incendio: Mínimo 90° C los conductores de suministro. Consulte a un electricista calificado para asegurarse el conductor correcto del circuito.

Supplier no asume ninguna responsabilidad por reclamaciones derivadas de una instalación inadecuada o negligente o la manipulación de este producto.



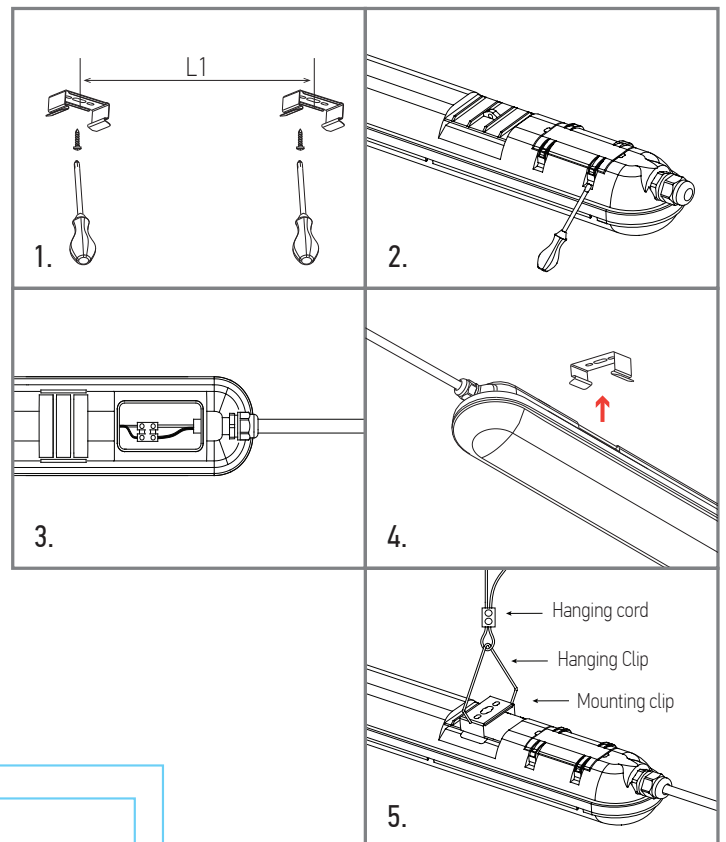
IMPORTANT SAFETY INFORMATION

Please read all the instructions below before installation.

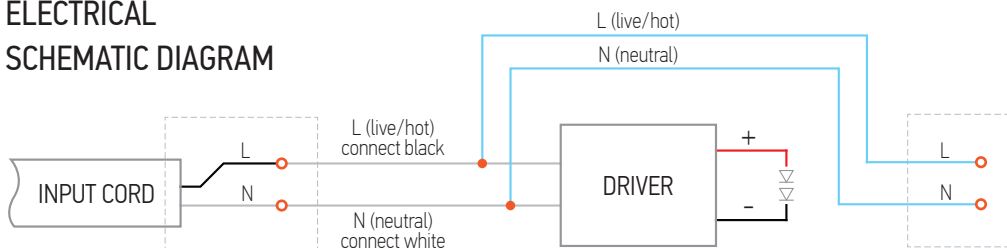
- Make sure that the supply voltage corresponds to the rated product voltage.
- The product must be installed by a qualified electrician in accordance with the National Electrical Code and corresponding local codes.
- If the product is damaged, do not use it.
- All wiring connections should be capped with UL approved wire connectors.
- For ceiling or suspended mount there are two stainless steel surface brackets included.
- This fixture is intended to be connected to a properly installed and grounded UL listed junction box with suitable strain relief means for power cord. The junction box is not included, should be purchased separately.

INSTALLATION STEPS

1. Affix the mounting brackets to the ceiling/wall.
for models LVP5M-2N1835, LVP5M-2N1840, LVP5M-2N1850
L1 = 9.8"±1.4" (250 ± 35 mm)
for models LVP5M-4N3635, LVP5M-4N3640, LVP5M-4N3650
L1 = 33.5"±1.4"(850 ± 35 mm)
2. Open the cover box on the back side of the fixture, using a screwdriver
3. Pass the power wire into a fixture and connect with the terminal block. Connect power cord of vaporproof fixture to the nearest junction box of power.
4. Affix the fixture to the ceiling/wall with mounting
5. Use a hanging set with mounting brackets for suspended mount if desired (optional).

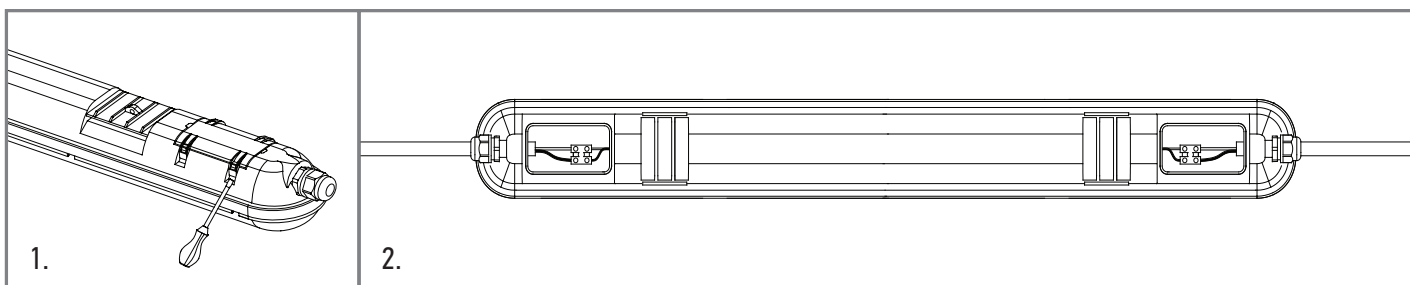


ELECTRICAL SCHEMATIC DIAGRAM





CONNECTING MULTIPLE FIXTURES TO ONE SWITCH



▶ Maximum 10 pcs of 18 W luminaire can be connected in one line.

▶ Maximum 5 pcs of 36 W luminaire can be connected in one line.

ELECTRICAL SCHEMATIC DIAGRAM FOR CONNECTING MULTIPLE FIXTURES

